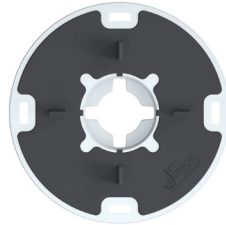




J3



H 24 - 30 mm



HEAD
Ø 150 mm



BASE
Ø 150 mm

JUNIOR	Sizes (mm)	Base diameter (mm)	Head diameter (mm)	Tabs (mm)
J3	H 24 - 30	Ø 150 mm	Ø 150 mm	Th. 2 - 3 - 4 mm H 12 mm

NOTE: The standard thickness of the tabs is 4 mm. 2 or 3 mm tab thickness are available on request.

Description of specifications

Supply of "JUNIOR" polypropylene pedestals for the installation of raised outdoor floors, consisting of a tilting base of 150 mm diameter, suitable to be laid on a waterproof layer. JUNIOR is equipped with a self-levelling system in the spherical cap of the base and screw, able to counteract slopes of the laying surface up to 1.5%.

The screw, adjustable from 12 to 30 mm, runs inside the head allowing the height adjustment of the partially laid floor pedestal.

The pedestal is equipped with three screws that allow the achievement of different heights.

The system can be adjusted with the aid of a special registration key supplied, which can also be used on partially laid flooring. The pedestal head, with a diameter of 150 mm, is covered in black rubber, with 2, 3 or 4 mm thick tabs, h 12 mm also made of break-proof rubber.

JUNIOR	CODE	Box weight (kg)	Box size (cm)	Boxes per pallet	Pallet weight (kg)	Pallet size (cm)	Pieces box
J3	KJR32430	9,9	39X55X27	32	310	80X120XH235	60

RAW MATERIAL	20% Talc-filled Polypropylene and rubber in the head and tabs
ENVIRONMENTAL IMPACT	Reusable and recyclable - Non-hazardous waste
FIELD OF APPLICATION	On any waterproofing membrane On any rigid insulation panel On any solid and compact laying surface

Advice for laying a raised floor on an insulating and waterproofing material

We recommend the use of EPS or XPS panels or other thermal insulation, with values of resistance to crushing "suitable for compression resistance exerted by raised flooring on PP supports". Failure to check the suitability of the insulating panel could cause the panel to be crushed under the weight of the raised floor, causing unaesthetic movements of the entire flooring; moreover, the excessive ductility of the insulating panel could compromise the performance of the waterproof covering and/or of the supports intended for raising the flooring. In this situation we recommend a preliminary exchange both with our technicians and with the insulation panel manufacturers; if there are any doubts regarding the compression strength of the panel, we always suggest the use of our Skudo separator for the sole protection of the waterproofing.

JUNIOR pedestal test

Aim of the tests carried out: check the resistance of the pedestals of the DPS Flooring line manufactured by the company DPS Solving, to the main mechanical and physical stresses to which they may be subjected, during the different conditions of use. The pedestals are made of injection moulded plastic (Polypropylene), and are composed of several modular parts.

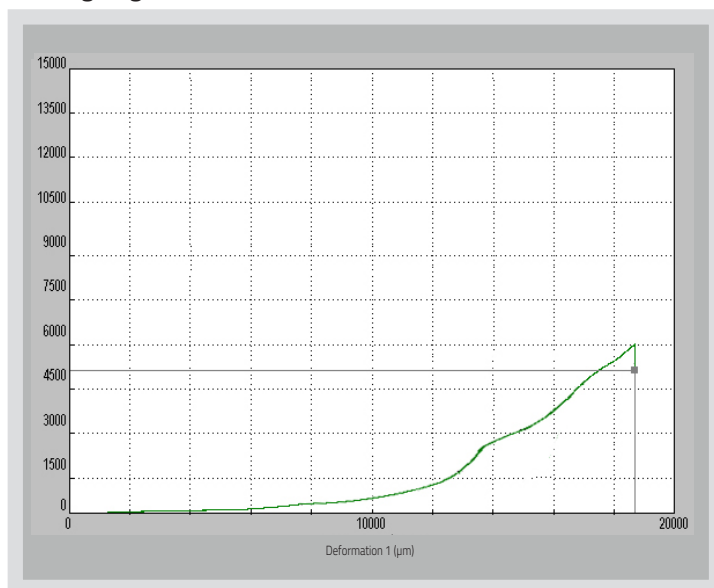
MECHANICAL TESTS - COMPRESSION TEST ON THE SUPPORT AFTER ARTIFICIAL AGEING

J1 - TILTING	4.147,36 N
J2 - TILTING	4.574,20 N
J3 - TILTING	4.133,82 N

RESULT:

The compression tests carried out show that at the different loading conditions before and after the ageing cycles, there are no significant alterations of the material, the average values obtained are similar to the model used. The average values of the maximum breaking load obtained in normal working conditions range from 4.133 N of J3 model to 4.574 N of J2 model.

J1 tilting diagram



CHEMICAL TESTS - 30 CYCLES 8 HOURS EACH

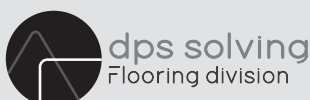
RESULT:

Chemical tests have shown that the material used (Polypropylene) has good physical resistance and dimensional stability, after an immersion time of 240h, to the following agents:

- de-icing salts;
- pool water with chlorine;
- frost-defrost;

With regard to resistance tests carried out with the main hydrocarbons (petrol and diesel for transport), the components showed slight decreases in resistance after 168 hours of total immersion.

LAYING SPECIFICATIONS	Junior pedestal does not require mechanical fixings or adhesives, and can be placed directly on the laying surface.
PRODUCT WARRANTY	5 years warranty against production defects (see general warranty conditions)



DPS Solving s.r.l.
Commercial & Logistics Office:
 Viale Commercio, 17 37044 Cologne Veneta (VR)
 @: info@dpssolving.com | Pec: dpssolving@pec.it
Production site: Via Pian di Morro II, 15 60043 Cerreto d'Esi (AN)
junior.dpssolving.com
 Tel. +39 0442 41.20.42 - N. Verde 800.47.27.76

